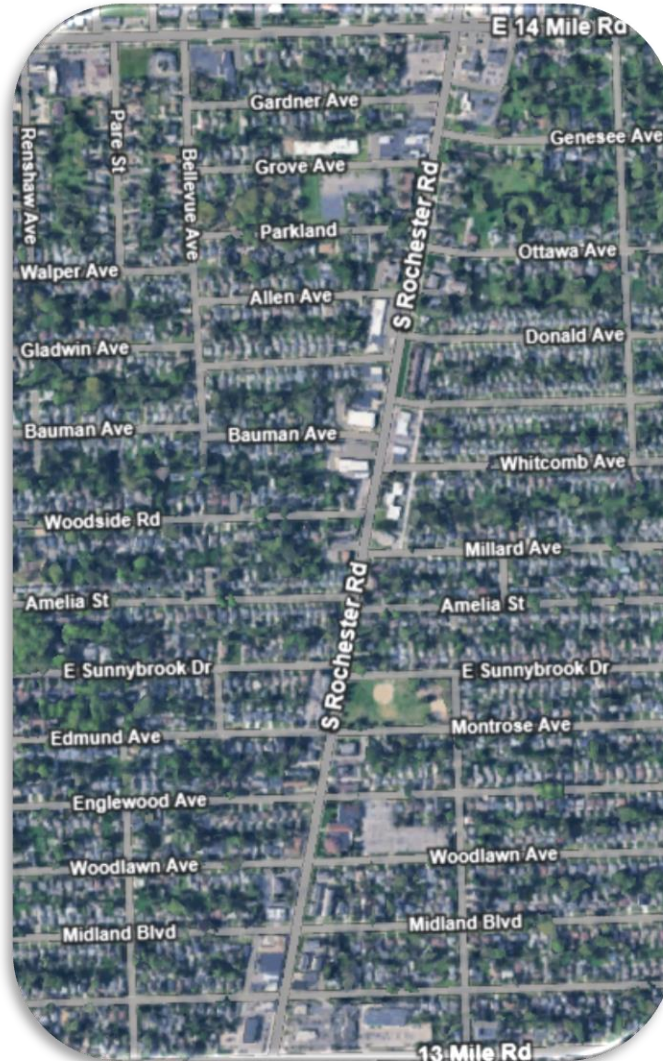


## Rochester Road Parking in the Public Right-of-Way

13 Mile Road to 14 Mile Road



### Photos of Existing Conditions

Commercial Properties pages 2-5

Residential Properties pages 6-9

**Commercial Properties**  
*(3 Total)*





**4724-4732 Rochester Road**

*Bra-Vo Intimates, Custom Swimwear, Salon Nero, Royal Inn Bar*

*Looking Northeast*



*Looking Southeast*



*Looking North along the sidewalk*



Notes on Existing Conditions:

Six (6) angled spaces exist. Spaces and drive aisle do not meet recommended dimensions. Cars overhang the public sidewalk. Traffic concerns with conflict at northern driveway (business vs. gas station traffic). Parking area has existed since the 1960s.

**4520 Rochester Road**  
*Amber Grove Apartments*

*Looking Southeast*



*Looking North*



Notes on Existing Conditions:

*Ten (10) angled spaces exist. There are 32 parking spaces on private property for 16 apartment units, which is adequate. Spaces and drive aisle do not meet recommended dimensions. Vehicles back out and drive over the public sidewalk. Parking area has existed since the 1960s.*



**4300-4324 Rochester Road**

*Green Lantern Pizzeria, Ridge Cabinetry, Royal Clips Barbershop,  
PKSA Karate, Classic Bodies Personal Training*

*Looking South*



*Looking North*



Notes on Existing Conditions:

21 angled spaces exist. Approximately 40 spaces on private property, limited or no public access to rear doors on buildings. Vehicles overhang onto public sidewalk. Parking is not allowed adjacent to business on Bauman Avenue. Spaces and drive aisle do not meet recommended dimensions, but enough space will exist to fit angled parking stalls with a grass buffer between the roadway and parking area. Vehicles back out and drive over the public sidewalk. Parking area has existed since the 1960s.



**Residential Properties**  
*(5 Total)*





**4610-4612 & 4616 Rochester Road**

*Asphalt parking pads, moderate condition, placed in 1980s*

*4610-4612 Rochester Road (Duplex)*



*4616 Rochester Road*



Notes on Existing Conditions:

*There is no buffer between public sidewalk and parking area. Placed in the 1980s. Moderate condition.*



**4622-4624 Rochester Road**

*Concrete parking pad, moderate condition, duplex property, placed in late 1990s*

*4622-4624 Rochester Road (duplex)*



Notes on Existing Conditions:

*There is no buffer between public sidewalk and parking area. Placed in the 1990s. Moderate condition.*



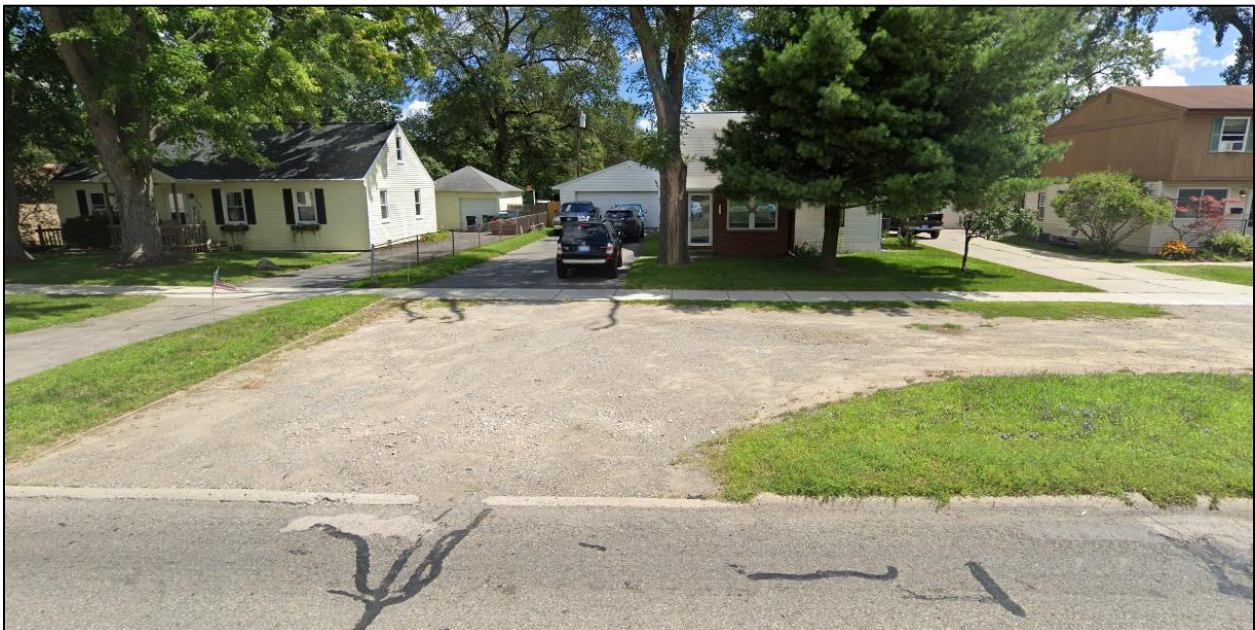
## 4628 & 4636 Rochester Road

*Gravel horseshoe parking and turn-around, moderate to poor condition,  
placed in the 1960s*

4628 Rochester Road



4636 Rochester Road



Notes on Existing Conditions:  
*Placed in the 1960s. Poor condition / gravel.*