

Trademark Building and Development

4823 Leafdale Blvd. Royal Oak 48073

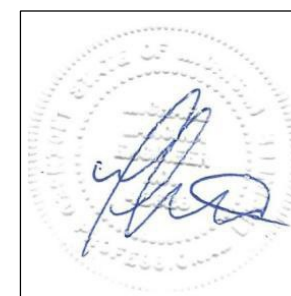


Drawing Index

C-1	Legend Sheet
A-1	Existing Conditions
A-2	Proposed Addition
A-3	Proposed Floorplan
A-4	Proposed Elevation and Materials
A-5	Signage
A-6	Site Survey

Project Scope / Description

Trademark Building and Development will be moving operations to 4823 Leafdale Royal Oak - The former Delwood Plumbing Supply location. The East (front) wall of the building we will squared off creating an approx. 858 SF addition. The Facade will recieve several upgrades including anew storefront glass entry, new windows and brick. Several landscaping improvements to be made adding two trees, several shrubs and laying new sod in place of unused asphalt. Interior renovations include new offices, bathrooms, etc. Most of the warehousing space will remain as is.



NUMBER	DATE	REVISION BY	DESCRIPTION
1	12/30/24	Alex Lancina	Planning
2	1/23/2025	Alex Lancina	Planning Rev1



Trademark Building and Development
4823 Leafdale Blvd. Royal Oak 48073

DRAWINGS PROVIDED BY:
Alex Lancina

DATE:
1/23/2025

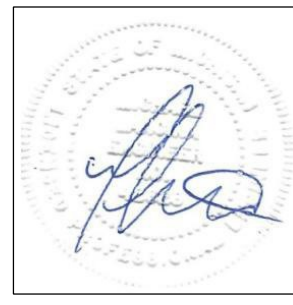
SCALE:

SHEET:
C-1

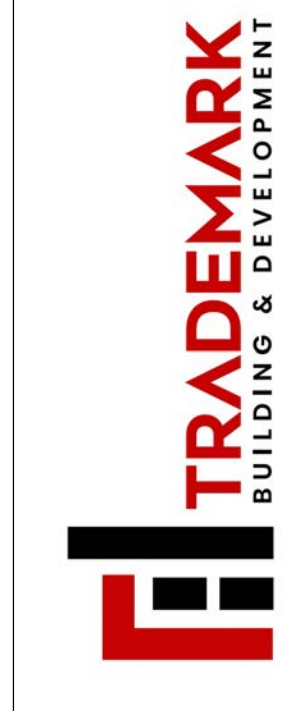
Aerial view



Existing Façade



NUMBER	DATE	REVISION BY	DESCRIPTION
1	12/30/24	Alex Lancina	Planning
2	1/23/2025	Alex Lancina	Planning Rev1



Trademark Building and Development
4823 Leafdale Blvd. Royal Oak 48073

DRAWINGS PROVIDED BY:
Alex Lancina

DATE:

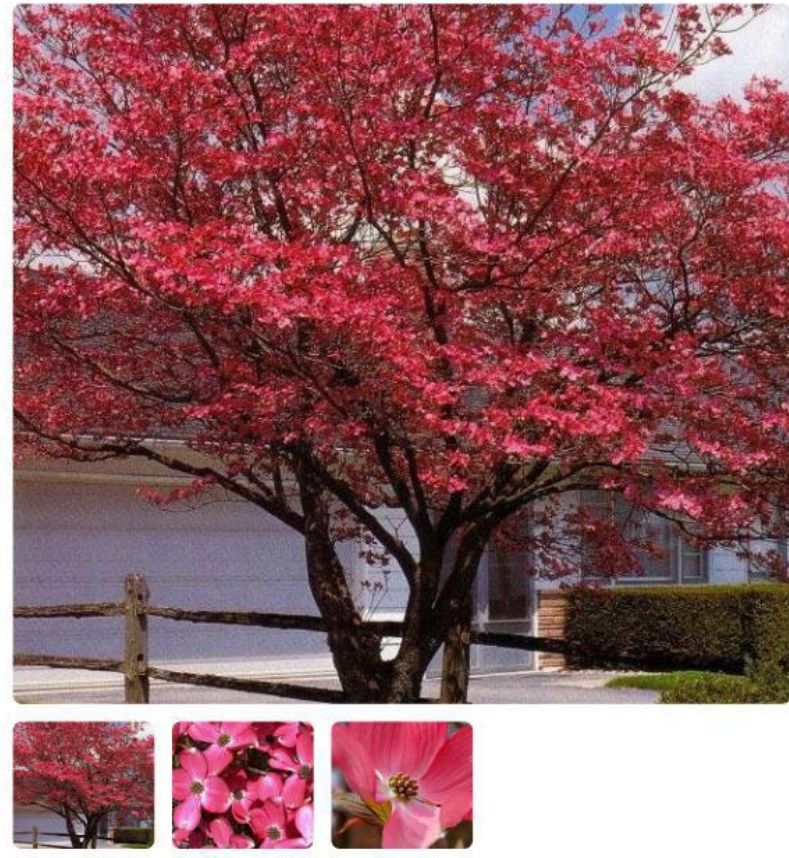
1/23/2025

SCALE:

SHEET:

A-1

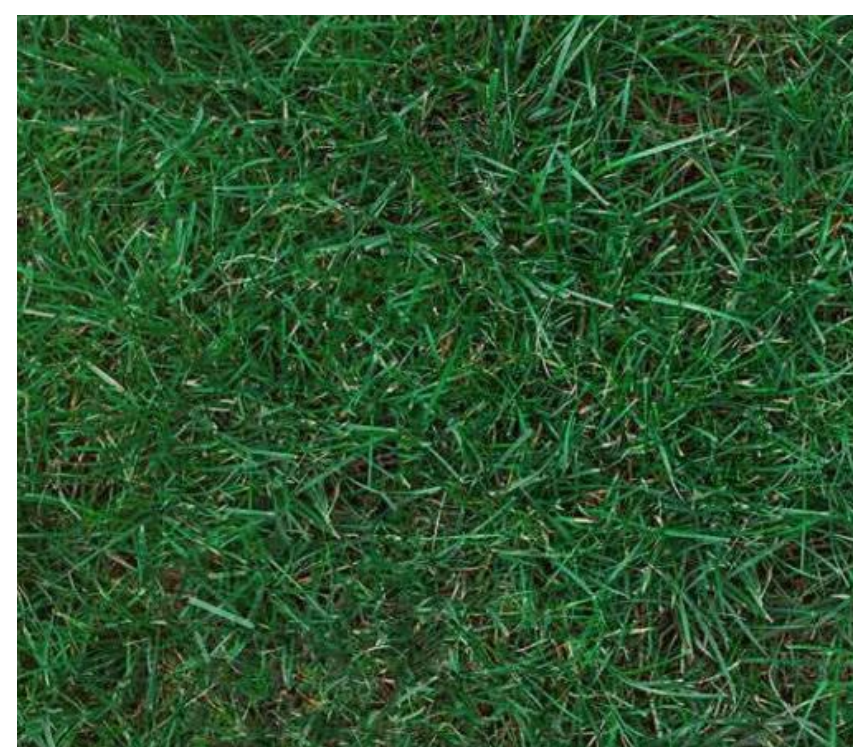
Red Dogwood Tree



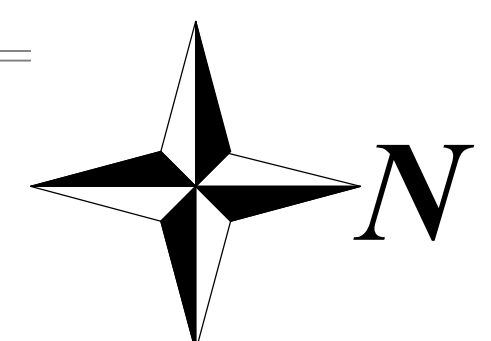
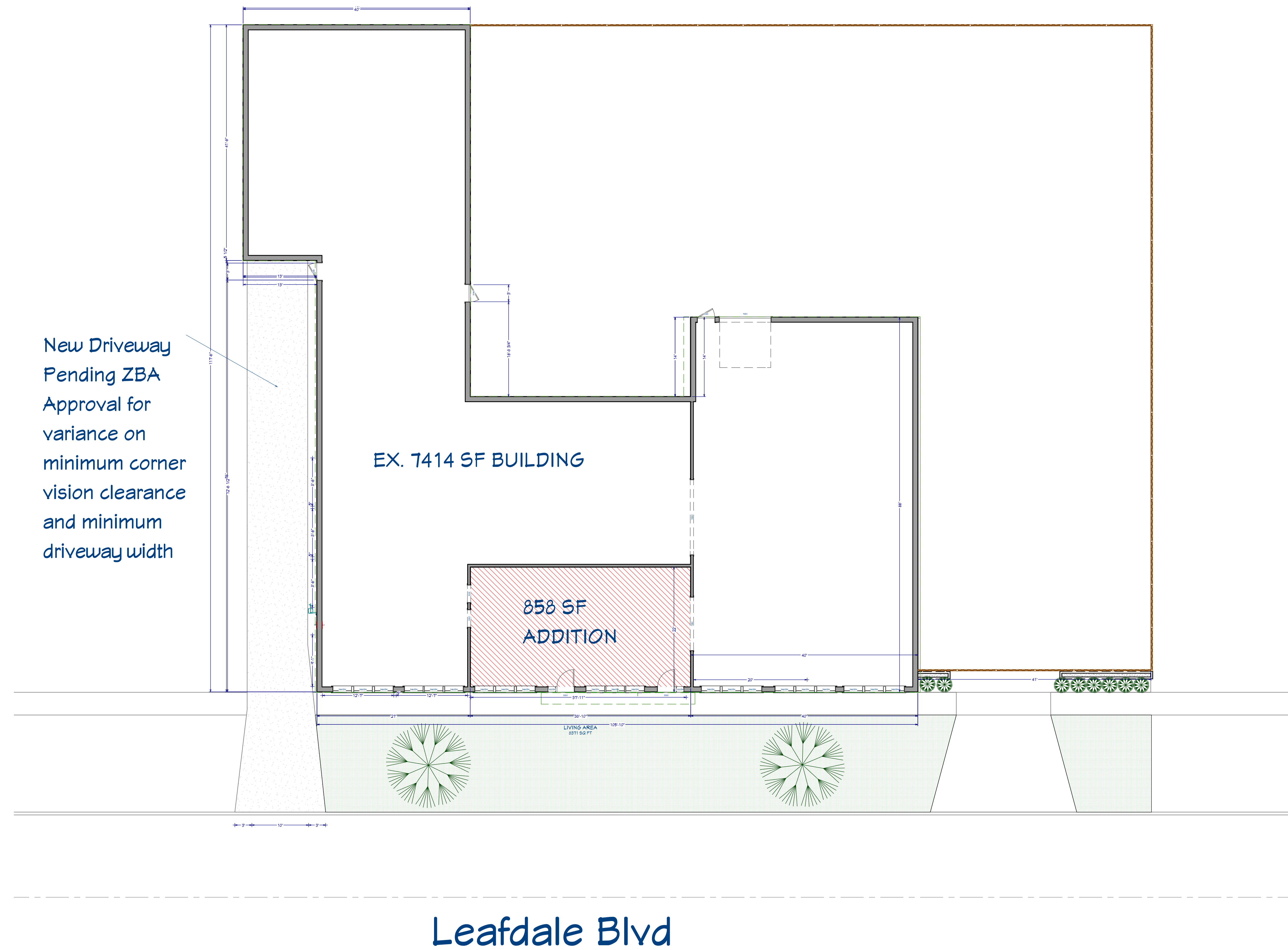
Wintergreen Boxwood
Buxus Microphylla



Kentucky Bluegrass
Poa Pratensis



Proposed Addition



NUMBER	DATE	REVISION BY	DESCRIPTION
1	12/30/24	Alex Lancina	Planning
2	1/23/2025	Alex Lancina	Planning Rev1



Trademark Building and Development
4823 Leafdale Blvd. Royal Oak 48073

DRAWINGS PROVIDED BY:
Alex Lancina

DATE:

1/23/2025

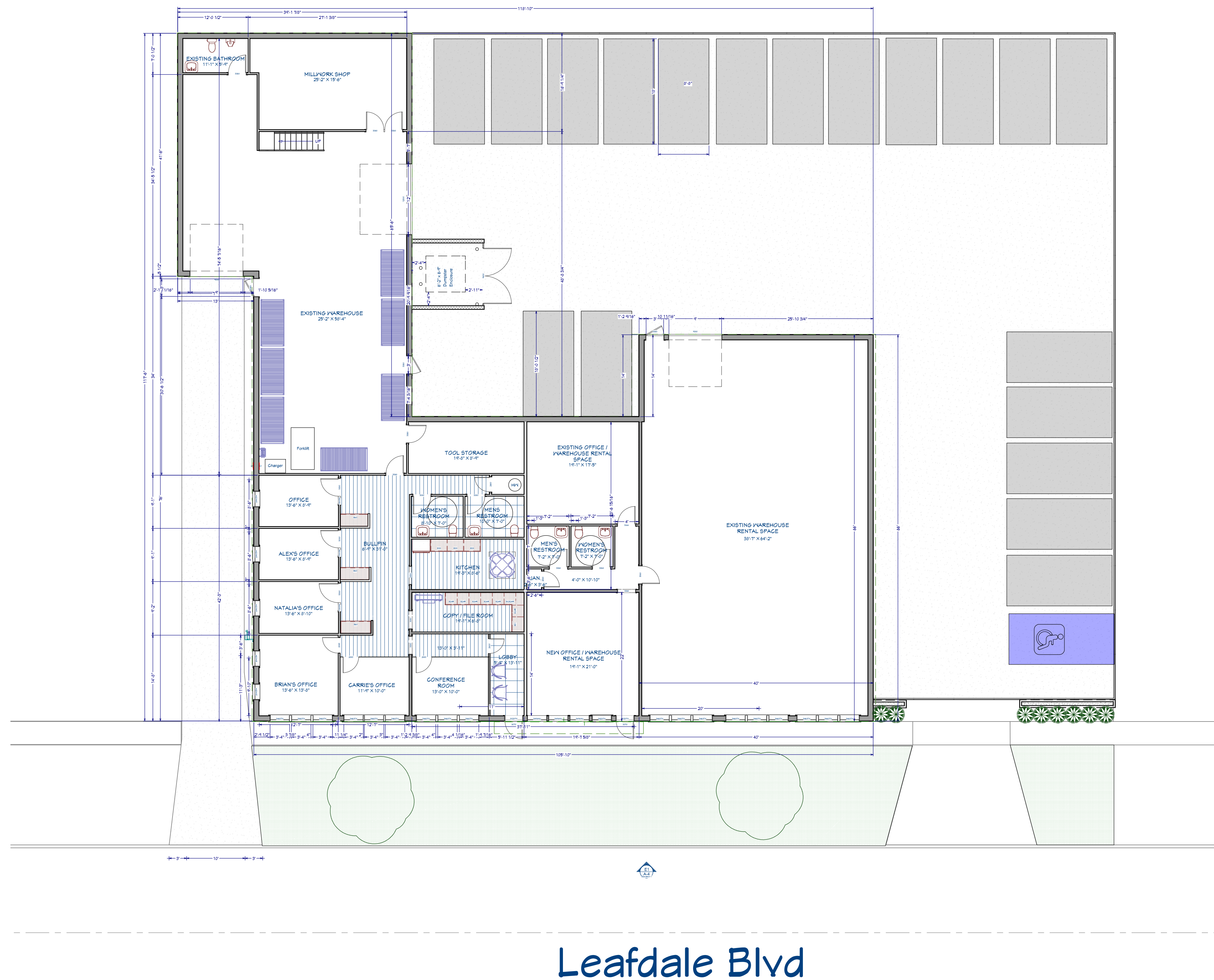
SCALE:

1" = 10'

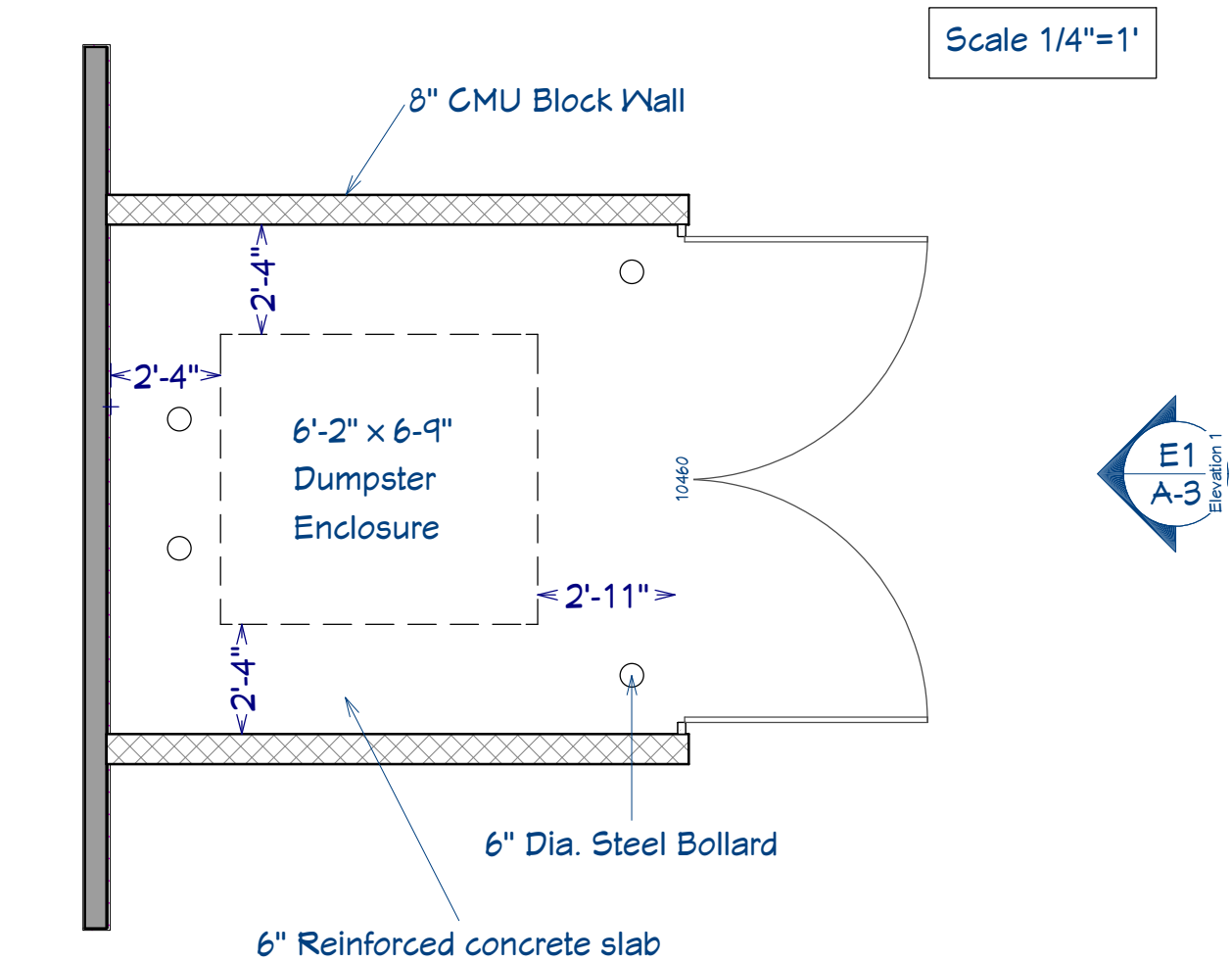
SHEET:

A-2

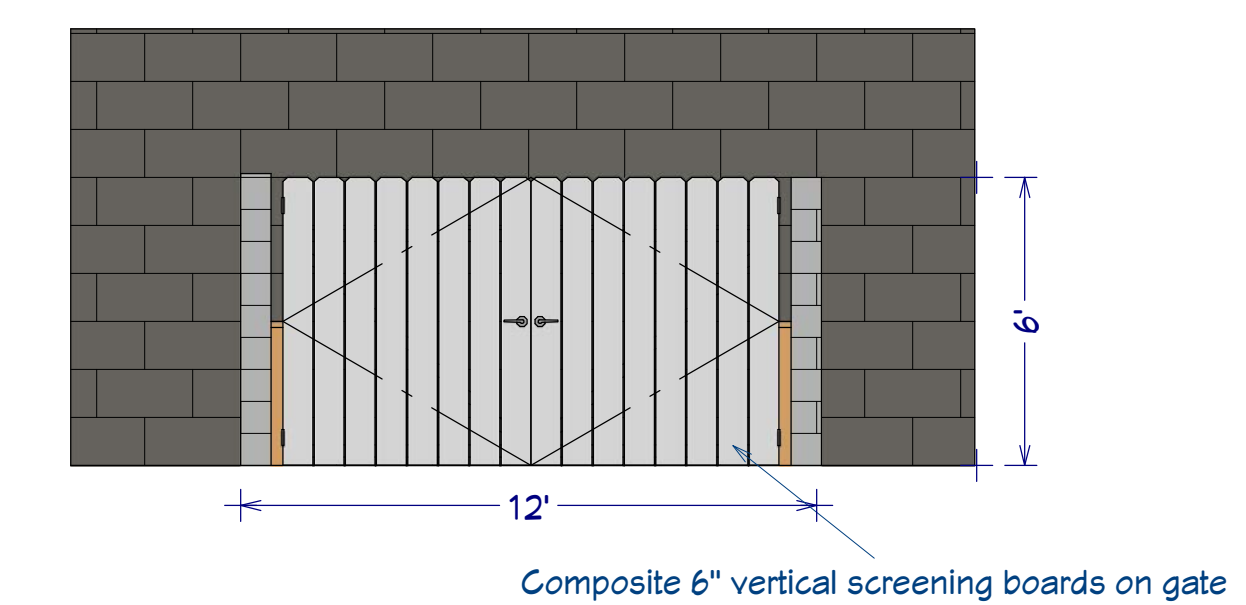
Proposed Floorplan



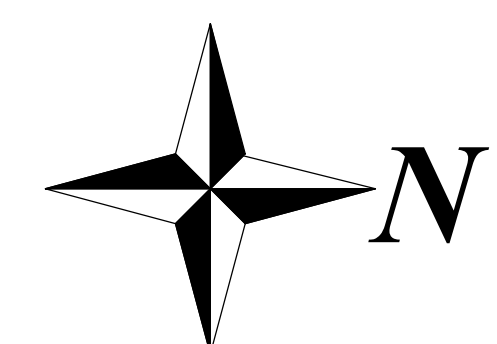
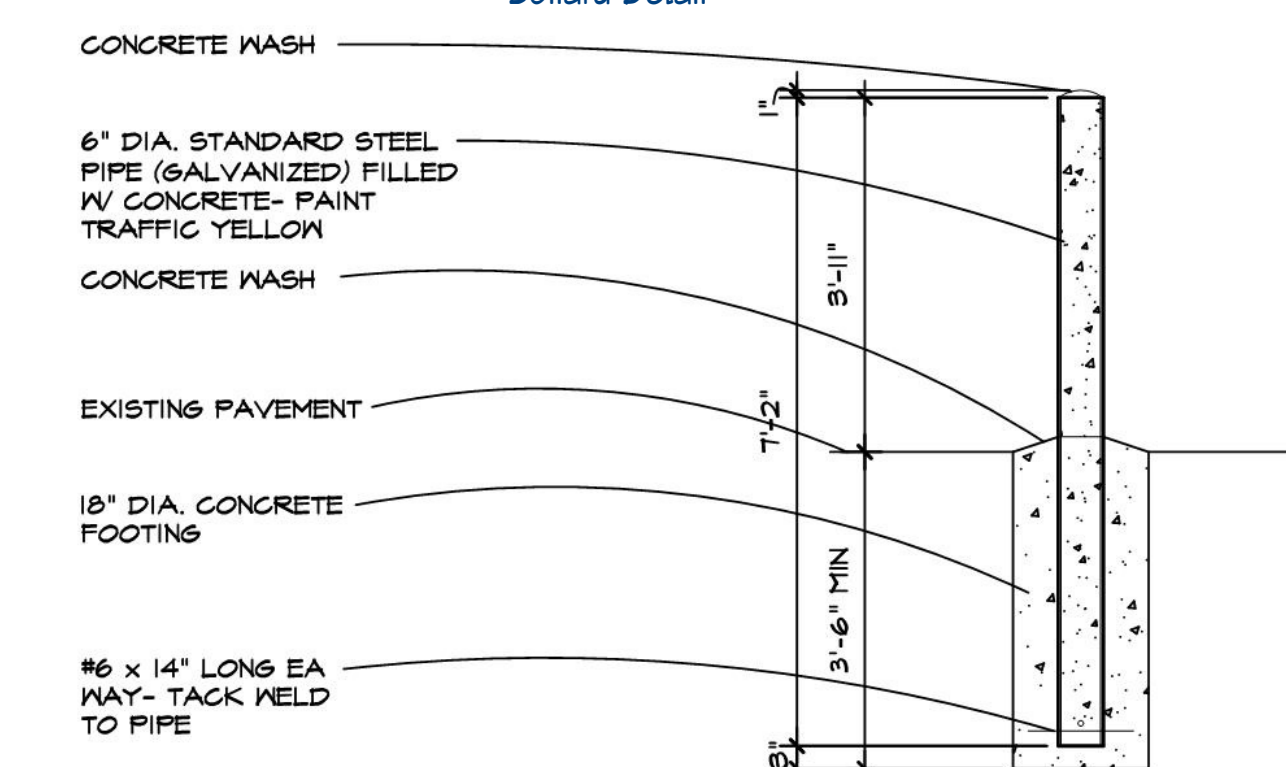
Dumpster Enclosure Details



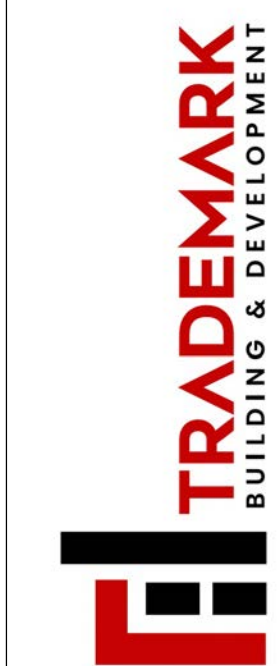
Elevation 1



Bollard Detail



REVISION TABLE		
NUMBER	DATE	REVISION BY DESCRIPTION
1	12/30/24	Alex Landina Planning
2	1/23/2025	Alex Landina Planning Rev1



Trademark Building and Development
4823 Leafdale Blvd. Royal Oak 48073

DRAWINGS PROVIDED BY:
Alex Lancina

DATE:

1/23/2025

SCALE:

$$1'' = 10'$$

SHEET:

A-3

Proposed Elevation and Materials



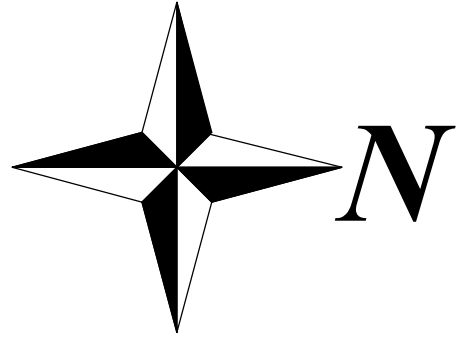
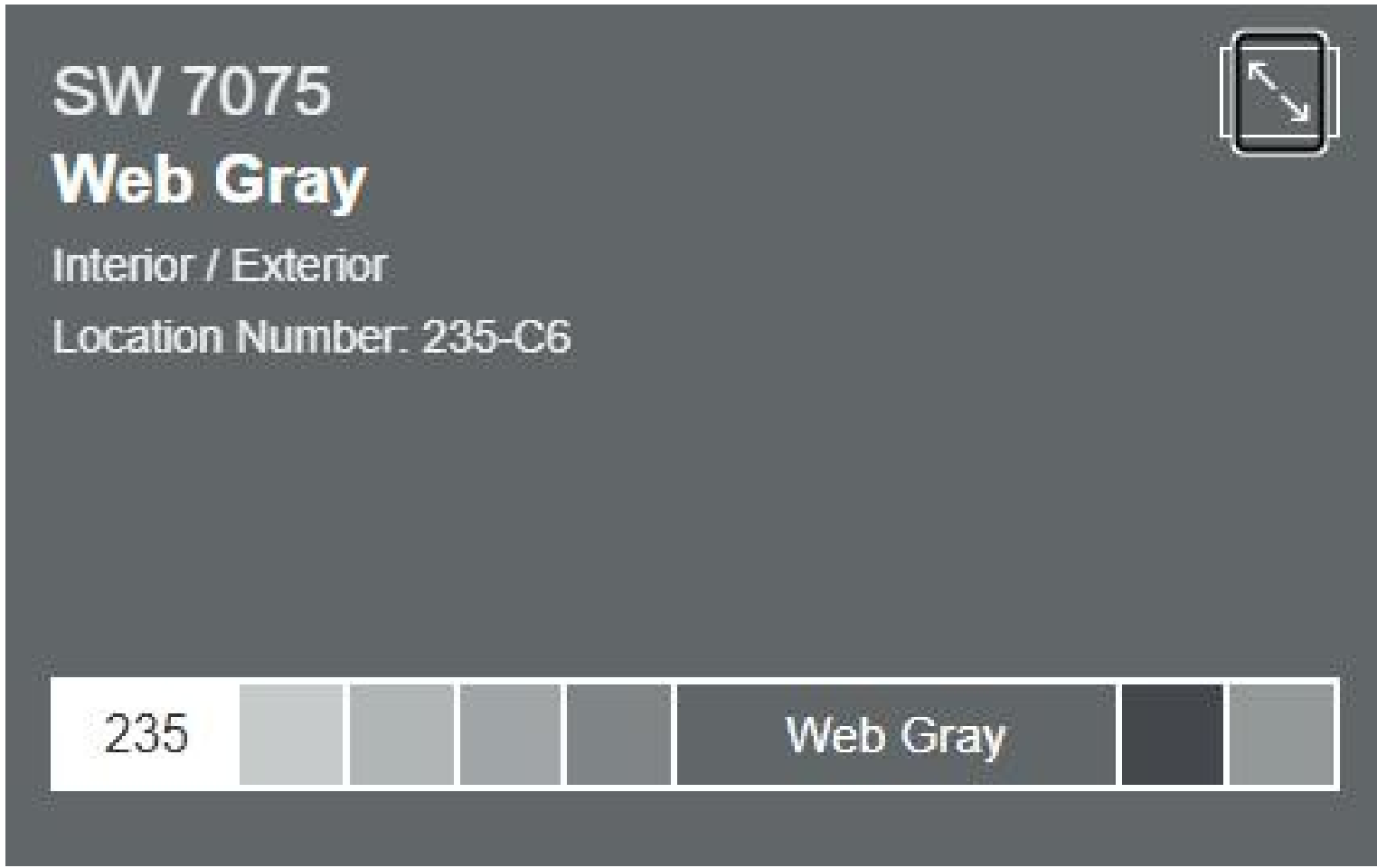
Brick - Manganese Ironspot Smooth



Clear anodized aluminum doors, windows and canopy



Existing Block Paint - SW Web Gray



REVISION TABLE			DESCRIPTION
NUMBER	DATE	REVISOR	DESCRIPTION
1	12/30/24	Alex Lancina	Planning
2	1/23/2025	Alex Lancina	Planning Rev1



Trademark Building and Development
4823 Leafdale Blvd. Royal Oak 48073

DRAWINGS PROVIDED BY:
Alex Lancina

DATE:

1/23/2025

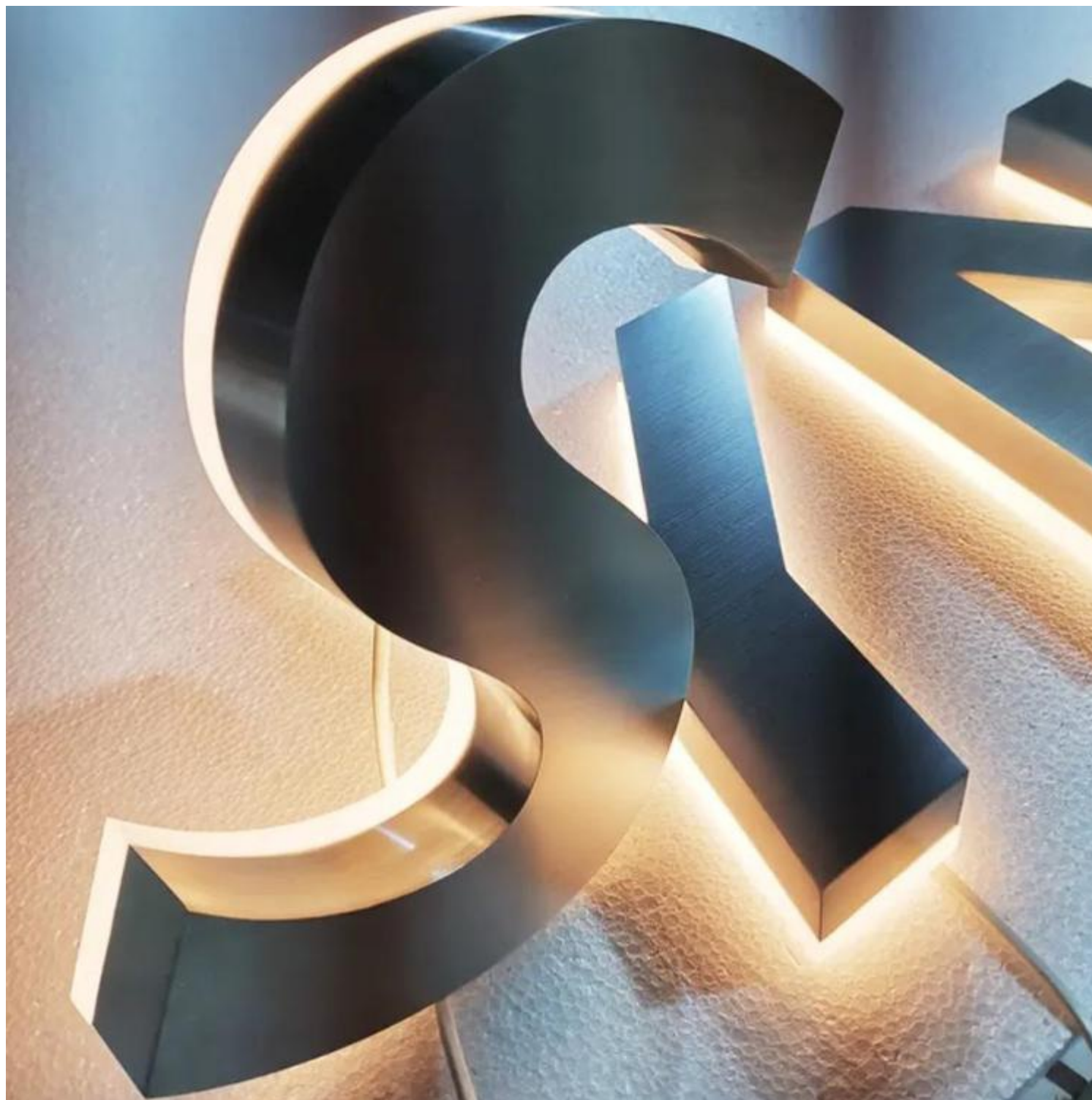
SCALE:

SHEET:

A-4



Example

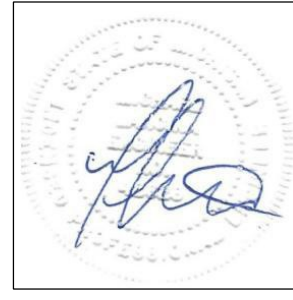


Example

Signage



Building exterior will feature two backlit 3'x12' Channel letter signs. Vinyl installed on metal standoffs. Total 72 square feet of singage.



REVISION TABLE			
NUMBER	DATE	REVISED BY	DESCRIPTION
1	12/30/24	Alex Lancina	Planning
2	1/23/2025	Alex Lancina	Planning Rev1



Trademark Building and Development
4823 Leafdale Blvd. Royal Oak 48073

DRAWINGS PROVIDED BY:
Alex Lancina

DATE:

1/23/2025

SCALE:

SHEET:

A-5

